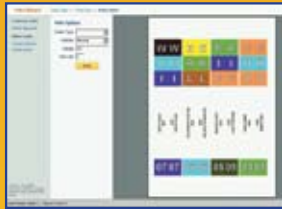


# Label your lateral files like a Pro with



With Avery® FilePro™ and Avery Lateral Filing Labels you can create files with brilliant colour-coded labels in four simple steps:



Step 1 - Design your labels.



Step 2 - Print your labels.



Step 3 - Apply labels to your file.



Step 4 - Completed files.

## Avery® FilePro™ File Labelling Software

- Print brilliant colour-coded labels for alphabetic, numeric or custom indexed filing systems quickly and easily.
- Labels can be tailored to suit your requirements whether you need barcodes, file headings, colour-coded indexing or text.

**System Requirements** - O/S: Windows® XP or Vista, RAM: 512MB, Free Disk Space: 1GB, Mouse and Keyboard, VGA/SVGA card with 4MB RAM, CD-ROM & Windows® compatible printer.

## Avery® Lateral Filing Labels

- Save time by applying one printed label strip rather than applying individual tab labels.
- Specially designed to fit the tab area of lateral files.
- Create a professional and organised look for quick and easy file identification.
- Guaranteed Jam Free™ laser printing.

- Easy to use with pre-designed templates.
- Label files quickly with one label instead of individual tab labels.
- Match label systems already in use.
- Alphabetic and numeric colour coding, file titles and barcodes.

Book your FREE demo and filing consultancy on 1800 644 353



Avery FilePro™ + Avery Labels

CodeCode	Description	Quantity
40000	Avery FilePro Software - Single User	1
40001	Avery FilePro Software - 2-10 Users	1
40002	Avery FilePro Software - 11 + User	1
959095	Avery Lateral Filing Labels A4 4 per sheet	Box of 100 sheets

Avery Lateral Filing Labels are used in other filing systems.



## Shelf lateral files

### What is lateral filing?

Lateral filing is a great space saving filing system based on colour coding your files, which easily identifies misplaced files.

#### EVERY STANDARD SHELF LATERAL FILES



To secure your documents in your lateral files use Avery's range of file fasteners. See page 9.

Code	Description	Colour	Size	Box
42713	Heavyweight	Buff	A4	100
46704	Extra heavyweight	Buff	A4	100
42513	Heavyweight	Buff	FC	100
46504	Extra Heavyweight	Buff	FC	100
46505	Super weight	Buff	FC	100
46501	Extra heavyweight	White	FC	Pkt15
46503	Extra Heavyweight	White	FC	100
46565	Super Heavyweight	White	FC	100
42520	Extra Heavyweight	White	Legal	100
42538	Extra heavyweight	Buff	Legal	100

#### File Sizes

A4=332mm x 242mm Notes=355mm x 242mm  
FC=367mm x 242mm Legal=388mm x 242mm

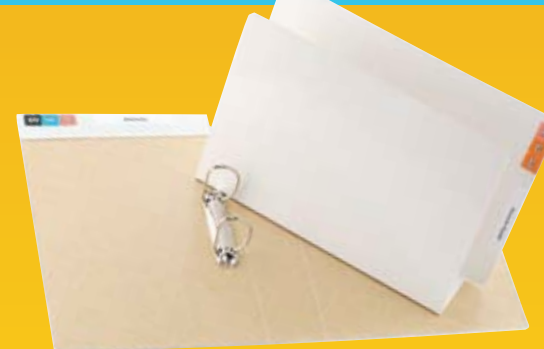
#### EVERY SHELF LATERAL FILES WITH FASTENERS



Each file is fitted with a file fastener which allows papers to be secured and easily accessed whenever required.

Code	Description	Colour	Size	Box
46510	Extra Heavyweight fitted with Tubeclip	White	FC	100
46511	Extra Heavyweight fitted with Permclip	White	FC	100
46512	Super Weight fitted Spiral Spring Transfer	White	FC	50

#### EVERY 52MM D RING LATERAL FILE (70MM EXPANSION)



Throw away those lever arch files and convert to "D" Ring Lateral Files.

Store all your documents in one colour coded filing system with 40% better use of floor space.

Code	Description	Colour	Size	Box
46513	Extra Heavy weight	White	FC	15
46514	Superweight	White	FC	10

#### Board Weight

Heavy weight = 240 - 250gsm Extra heavy weight = 300 - 325gsm  
Super weight = 370 - 380gsm

## AVERY SHELF LATERAL TWIN TAB FILE



- Multi purpose file can be used in shelf lateral/draw filing.
- This type of file has a top & side tab on which colour coding & file title labels can be affixed.

Code	Description	Colour	Size	Box
46555	Extra Heavy Weight Top/Side Tab	White	FC	100

## AVERY SHELF LATERAL FILES SOLID COLOURS



Code	Description	Colour	Size	Box
45113	Red	Extra Heavy Weight	FC	100
45213	Blue	Extra Heavy Weight	FC	100
45313	Green	Extra Heavy Weight	FC	100
45413	Yellow	Extra Heavy Weight	FC	100

## AVERY SHELF LATERAL FILES COLOUR MYLAR END TABS



- Each tab is colour coded for easy identification of file contents.
- Colour coded tab allows for colour coding based on departments, projects etc.
- Tab reinforced for durability.
- Available in Foolscap & Legal.
- Legal size is found in other popular filing systems.

Code	Description	Colour	Size	Box
42421	Extra Heavyweight	White Clear Tab	FC	100
42430	Extra Heavyweight	White/Pink Tab	FC	100
42431	Extra Heavyweight	White/Red Tab	FC	100
42433	Extra Heavyweight	White/Dk Orange Tab	FC	100
42434	Extra Heavyweight	White/Light Green Tab	FC	100
42435	Extra Heavyweight	White/Dk Green Tab	FC	100
42436	Extra Heavyweight	White/Light Blue Tab	FC	100
42437	Extra Heavyweight	White/Purple Tab	FC	100
42440	Extra Heavyweight	White/Yellow Tab	FC	100
42521	Extra Heavyweight	White/Clear Tab	Legal	100
42531	Extra Heavyweight	White/Red Tab	Legal	100
42533	Extra Heavyweight	White/Dk Orange Tab	Legal	100
42534	Extra Heavyweight	White/Light Green Tab	Legal	100
42535	Extra Heavyweight	White/Dk Green	Legal	100
42536	Extra Heavyweight	White/Light Blue Tab	Legal	100
42537	Extra Heavyweight	White/Purple Tab	Legal	100
42540	Extra Heavyweight	White/ Yellow Tab	Legal	100

**Shelf  
lateral  
files**

# Shelf lateral pockets

## AVERY LATERAL POCKETS & WALLETS



Code	Description	Colour	Size	Box
43949	Extra Heavyweight Pocket Wallet 40mm expansion	White	FC	20
43958	Super weight Concertina Wallet 85mm expansion	White	FC	25
43957	Super weight Concertina Wallet 85mm expansion	White	Legal	25

File Sizes  
 A4=332mm x 242mm Notes=355mm x 242mm  
 FC=367mm x 242mm Legal=388mm x 242mm

## AVERY SHELF LATEAL DOCUMENT WALLETS



- 40mm expansion with flap.
- Ideal for storing documents that cannot be hole punched such as annual reports, legal and financial documents.

Code	Description	Colour	Size	Box
43950	Extra Heavyweight	Buff	FC	20
43951	Extra Heavyweight	Red	FC	20
43952	Extra Heavyweight	Blue	FC	20
43953	Extra Heavyweight	Green	FC	20
43954	Extra Heavyweight	Yellow	FC	20
43955	Extra Heavyweight	White	FC	20
43956	Extra Heavyweight	Buff	Legal	20

## LATERAL FILE WITH LEFT HAND POCKET



- This file has an inside wallet on left hand side, allowing you to store documents.
- Pocket has a 30mm expansion.
- Fastener options.

Code	Description	Colour	Size	Box
43960	Heavyweight with 30mm left hand pocket	White	FC	100

Board Weight  
 Heavy weight=240-250gsm Extra heavy weight=300-325gsm  
 Super weight=370-380gsm

## AVERY LATERAL NOTES STANDARD FILES As found in other popular filing systems

The notes range have printed panels on the covers to enable notes & related file information to be noted directly onto the file.



Code	Description	Colour	Size	Box
46710	Standard File	White ptd Blue	355x235mm	100
46713	With left hand pocket	White ptd Blue	355x235mm	20

## AVERY LATERAL NOTES FILES WITH FASTENERS



Code	Description	Colour	Size	Box
46711	Fitted with Tubeclip File Fastener	White ptd Blue	355x235mm	100
46712	Fitted with Spiral Spring Transfer fastener	White ptd Blue	355x235mm	50

## AVERY LATERAL NOTES TOP TAB FILE AND WALLET



Code	Description	Colour	Size	Box
46714	Twin Tab Top/Side File	White ptd Blue	355x235mm	100
46716	Twin Tab Top/Side Pocket Wallet 40mm Expansion	White ptd Blue	355x235mm	20

## LATERAL NOTES POCKETS & WALLETS



Code	Description	Colour	Size	Box
46715	Open Top Wallet 40mm expansion	White ptd Blue	355x235mm	20
46718	Concertina Wallet 85mm expansion	White ptd Blue	355x235mm	25
46717	Document Wallet Flap 40mm expansion	White ptd Blue	355x235mm	20

Notes  
Range

## Fullvue shelf lateral files

### Fullvue shelf lateral filing

This unique Fullvue file range of filing products offer all the benefits of shelf lateral filing with the added advantage of 100% visibility of file tab & title label. Unique flap on the front edge that wraps around the file contents. Fasteners can be affixed into the file for further securing documents.

#### FULLVUE SHELF LATERAL FILES – WHITE AND COLOURED TAB

Available in two spine widths – 30mm & 50mm depending on paper capacity you require.



Code	Description	Colour	Size	Box
165720	Extra Heavyweight 30mm gussett	White	FC	100
165715 Red	Extra Heavyweight 30mm gussett	White/Red tab & spine	FC	100
165715 Orange	Extra Heavyweight 30mm gussett	White/Orange tab & spine	FC	100
165715 Yellow	Extra Heavyweight 30mm gussett	White/Yellow tab & spine	FC	100
165715 Lt Blue	Extra Heavyweight 30mm gussett	White/Lt Blue tab & spine	FC	100
165715 Dk Green	Extra Heavyweight 30mm gussett	White/Dk Green tab & spine	FC	100
165715 Purple	Extra Heavyweight 30mm gussett	White/Purple tab & spine	FC	100
165707	Extra Heavyweight 50mm gussett	White	FC	100
165704	Extra Heavyweight Twin Tab	White	FC	50

## QUICKVUE AN ALTERNATIVE TO SUSPENSION FILES

- Use Quickvue files with your existing filing cabinets drawers and pedestal drawers.
- Simply add a file rack to each drawer.
- Quickvue is the cost effective organized alternative to suspension files. Easy identification of files with angled tab across the top of each file.
- Quickvue eliminates the problem of files falling off the metal rails, files bending due to heavy weight & crystal tabs falling off the top of each file.

**Two & Four drawer packages  
available with draw cabinets.  
NOT LISTED**



## TWO DRAW AND FOUR DRAW FILING PACKAGE



Code	Description	Colour	Size	Box
166007	Extra Heavyweight	White files /with file title labels	FC	50
40447	File Rack straight edge	White	500x390mm	each
49997	Single drawer filing package	50 White files 72 file title labels 1 file rack	FC	each
49996	Two Drawer Filing Package	100 White Files, 144 file title labels, 2 file racks 1 top tab label starter kit	FC	each
49998	Four Drawer Filing Package	200 White Files, 288 file title labels, 4 file racks 1 top tab label starter kit	FC	each

**Quickvue  
Files**

## File fasteners

### TUBECLIP FILE FASTENER

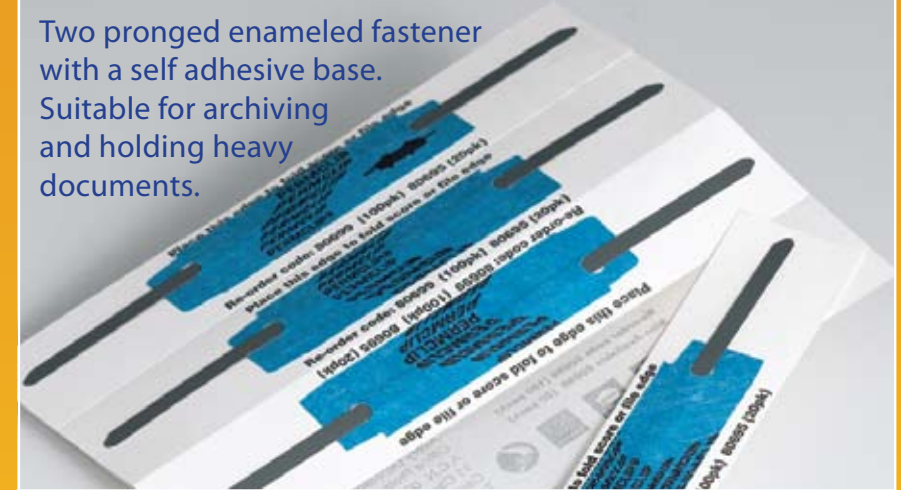
Consists of 3 pieces: self adhesive base which sticks to the file surface, plastic coloured compressor bar which is placed on top of the pages and the plastic U piece which inserts into the compressor bar to secure the documents. Tubeclip expands as your file fills, to eliminate wasted space.



code	description	colour	quantity
44001	Tubeclip-3 piece set	yellow	500
44009Y	Tubeclip-3 piece set	yellow	100
44009B	Tubeclip-3 piece set	blue	100
44009R	Tubeclip-3 piece set	red	100
44005B	Tubeclip-3 piece set	blue	10
44005R	Tubeclip-3 piece set	red	10
44005Y	Tubeclip-3 piece set	yellow	10
44006	Tubeclip-adhesive base only 3 piece set	yellow	100
44021	Unitube no adhesive base 3 piece set	yellow	500
44007Y	Tubeclip-U piece only	yellow	25
44007B	Tubeclip-U piece only	blue	25
44008Y	Tubeclip compressor bar only	yellow	25
44008B	Tubeclip compressor bar only	blue	25

### PERMCLIP FILE FASTENER

Two pronged enameled fastener with a self adhesive base. Suitable for archiving and holding heavy documents.



code	description	quantity
80699	Permclip file fasteners	100
80695	Permclip file fasteners	20

### QUICKCLIP FILE FASTENER

Plastic coated metal clip in one complete unit with adhesive on the base. Ideal for presentation folders and slim files.



code	description	colour	quantity
80692	Quickclip	white	50

## AVERY OUTGUIDES

- Use when a file is removed from a filing system.
- Simply replace the file with an outguide on which the file user has noted where the file is going.



Code	Description	Colour	Size	Pkt
41516	Heavyweight	Buff/Red Tab	388x242mm	25
41546	Heavyweight	Buff/Yellow Tab	388x242mm	25
41586	Heavyweight	Buff/Blue Tab	388x242mm	25

## AVERY FILE TITLE LABELS



- Colour band labels for use with files to identify the file contents.
- For Use with Fullvue, Quickvue & standard lateral files.
- Easy to use label templates, which appear in leading word processing software packages.
- Permanent adhesive 18 labels per sheet.

Code	Description	Colour	Size	Pkt
45201	Ptd red border	White	A4	25 shts
45202	Ptd blue border	White	A4	25 shts
45203	Ptd green border	White	A4	25 shts

## AVERY FILE RACKS



For use in lateral cupboards, file cabinets drawers and shelving  
Ensure files remain upright.

Code	Description	Colour	Size	Pkt
40447	Rack straight edge	White	500x390mm	each
40451	Rack	White	750x390mm	each
40452	Rack	White	900x290mm	each
40448	Rack	White	900x390mm	each
40460	Rack	White	1060x375mm	each
40454	Rack	White	1200x390mm	each

**Lateral  
filing  
accessories**

# Coding Labels

## LATERAL FILING COLOUR CODING LABELS



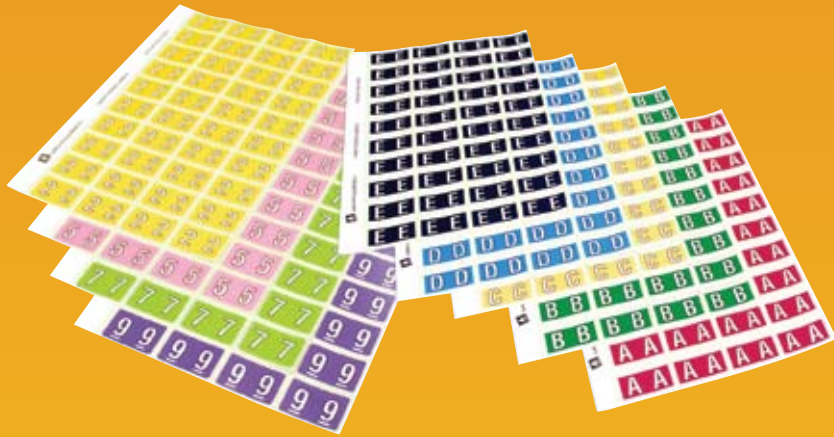
- Avery Alpha and Numeric Side Tab Coding Labels.
- Packets of 180 alphabetical, numerical and year code labels.
- Designed specifically for use with lateral filing systems.

Code	Description	Colour	Size	Box
43301	Alpha A	Pink	25x38mm	180 labels
43302	Alpha B	Magenta	25x38mm	180 labels
43303	Alpha C	Orange	25x38mm	180 labels
43304	Alpha D	Dk Orange	25x38mm	180 labels
43305	Alpha E	Yellow	25x38mm	180 labels
43306	Alpha F	Light Green	25x38mm	180 labels
43307	Alpha G	Dark Green	25x38mm	180 labels
43308	Alpha H	Blue	25x38mm	180 labels
43309	Alpha I	Purple	25x38mm	180 labels
43310	Alpha J	Mauve	25x38mm	180 labels
43311	Alpha K	Brown	25x38mm	180 labels
43312	Alpha L	Mustard	25x38mm	180 labels
43313	Alpha M	Pink	25x38mm	180 labels
43327	Alpha MC	Black	25x38mm	180 labels

Code	Description	Colour	Size	Box
43314	Alpha N	Magenta	25x38mm	180 labels
43315	Alpha O	Orange	25x38mm	180 labels
43316	Alpha P	Dk Orange	25x38mm	180 labels
43317	Alpha Q	Yellow	25x38mm	180 labels
43318	Alpha R	Light Green	25x38mm	180 labels
43319	Alpha S	Dark Green	25x38mm	180 labels
43320	Alpha T	Blue	25x38mm	180 labels
43321	Alpha U	Purple	25x38mm	180 labels
43322	Alpha V	Mauve	25x38mm	180 labels
43323	Alpha W	Brown	25x38mm	180 labels
43324	Alpha X	Mustard	25x38mm	180 labels
43325	Alpha Y	White/Grey	25x38mm	180 labels
43326	Alpha Z	Grey	25x38mm	180 labels
43327	Slash /	White/Black	25x38mm	180 labels
43340	Numeric 0	Pink	25x38mm	180 labels
43341	Numeric 1	Magenta	25x38mm	180 labels
43342	Numeric 2	Orange	25x38mm	180 labels
43343	Numeric 3	Red	25x38mm	180 labels
43344	Numeric 4	Light Green	25x38mm	180 labels
43345	Numeric 5	Dark Green	25x38mm	180 labels
43346	Numeric 6	Blue	25x38mm	180 labels
43347	Numeric 7	Purple	25x38mm	180 labels
43348	Numeric 8	Mauve	25x38mm	180 labels
43349	Numeric 9	Brown	25x38mm	180 labels
43358	Year 08	Mauve	25x38mm	180 labels
43359	Year 09	Brown	25x38mm	180 labels
43399	Label Starter Kit	72 labels of each alpha and numeric		

Rolls 500 available  
 Alpha Code 432\*\*-A=01-Z=26  
 Numeric Code 432\*\*0=40 09=49  
 Year Code 432\*08=58  
 Year Code 432\*09=59

## AVERY SERIES 4 SIDE TAB CODING LABELS



## Coding Labels

- Packet of 240 Alphabetical, Numerical labels.
- Series 4 labels are found in other popular filing systems.

Code	Description	Colour	Size	Box
44501	Alpha A	Red	42x25mm	240 labels
44502	Alpha B	Dark Green	42x25mm	240 labels
44503	Alpha C	Yellow	42x25mm	240 labels
44504	Alpha D	Blue	42x25mm	240 labels
44505	Alpha E	Grey	42x25mm	240 labels
44506	Alpha F	Pink	42x25mm	240 labels
44507	Alpha G	Brown	42x25mm	240 labels
44508	Alpha H	Light Green	42x25mm	240 labels
44509	Alpha I	Orange	42x25mm	240 labels
44510	Alpha J	Purple	42x25mm	240 labels
44511	Alpha K	Red	42x25mm	240 labels
44512	Alpha L	Dark Green	42x25mm	240 labels
44513	Alpha M	Yellow	42x25mm	240 labels
44527	Alpha MC	Brown	42x25mm	240 labels
44514	Alpha N	Purple	42x25mm	240 labels
44515	Alpha O	Blue	42x25mm	240 labels
44516	Alpha P	Gey	42x25mm	240 labels
44517	Alpha Q	Light Green	42x25mm	240 labels

Code	Description	Colour	Size	Box
44518	Alpha R	Pink	42x25mm	240 labels
44519	Alpha S	Brown	42x25mm	240 labels
44520	Alpha T	Orange	42x25mm	240 labels
44521	Alpha U	Red	42x25mm	240 labels
44522	Alpha V	Dark Green	42x25mm	240 labels
44523	Alpha W	Blue	42x25mm	240 labels
44524	Alpha X	Pink	42x25mm	240 labels
44525	Alpha Y	Purple	42x25mm	240 labels
44526	Alpha Z	Light Green	42x25mm	240 labels
44528	Numeric 0	Red	42x25mm	240 labels
44529	Numeric 1	Dark Green	42x25mm	240 labels
44530	Numeric 2	Orange	42x25mm	240 labels
44531	Numeric 3	Blue	42x25mm	240 labels
44532	Numeric 4	Grey	42x25mm	240 labels
44533	Numeric 5	Pink	42x25mm	240 labels
44534	Numeric 6	Brown	42x25mm	240 labels
44535	Numeric 7	Light Green	42x25mm	240 labels
44536	Numeric 8	Orange	42x25mm	240 labels
44537	Numeric 9	Purple	42x25mm	240 labels
44538	Starter Kit Alpha	1 sheet of each A-Z	42x25mm	240 labels
44539	Starter Kit Numeric	1 sheet of each 0-9	42x25mm	400 Labels

## Coding Labels

### AVERY TOP TAB COLOUR CODING LABELS



Code	Description	Colour	Size	Box
44401	Alpha A	Pink	20x30mm	150 labels
44402	Alpha B	Magenta	20x30mm	150 labels
44403	Alpha C	Orange	20x30mm	150 labels
44404	Alpha D	Dk Orange	20x30mm	150 labels
44405	Alpha E	Yellow	20x30mm	150 labels
44406	Alpha F	Light Green	20x30mm	150 labels
44407	Alpha G	Dark Green	20x30mm	150 labels
44408	Alpha H	Blue	20x30mm	150 labels
44409	Alpha I	Purple	20x30mm	150 labels
44410	Alpha J	Mauve	20x30mm	150 labels
44411	Alpha K	Brown	20x30mm	150 labels
44412	Alpha L	Mustard	20x30mm	150 labels
44413	Alpha M	Pink/ Stripe	20x30mm	150 labels
44427	Alpha MC	Black/Stripe	20x30mm	150 labels
44414	Alpha N	Magenta/Stripe	20x30mm	150 labels
44415	Alpha O	Orange/Stripe	20x30mm	150 labels
44416	Alpha P	Dk Orange/Stripe	20x30mm	150 labels

- Colour Coded labels designed specifically for use with top tab lateral files & Quickvue filing systems.
- Top tab allows you to easily identify lost files.
- Available in Alpha & Numeric & Year Code labels in packet 150.

Code	Description	Colour	Size	Box
44417	Alpha Q	Yellow/Stripe	20x30mm	150 labels
44418	Alpha R	Light Green/ Stripe	20x30mm	150 labels
44419	Alpha S	Dark Green/Stripe	20x30mm	150 labels
44420	Alpha T	Blue/Stripe	20x30mm	150 labels
44421	Alpha U	Purple/Stripe	20x30mm	150 labels
44422	Alpha V	Mauve/Stripe	20x30mm	150 labels
44423	Alpha W	Brown	20x30mm	150 labels
44424	Alpha X	Mustard	20x30mm	150 labels
44425	Alpha Y	White/Grey	20x30mm	150 labels
44426	Alpha Z	Grey	20x30mm	150 labels
44428	Slash /	White/Black	20x30mm	150 labels
44200	Numeric 0	Pink	20x30mm	150 labels
44201	Numeric 1	Magenta	20x30mm	150 labels
44202	Numeric 2	Orange	20x30mm	150 labels
44203	Numeric 3	Dk Orange	20x30mm	150 labels
44204	Numeric 4	Light Green	20x30mm	150 labels
44205	Numeric 5	Dark Green	20x30mm	150 labels
44206	Numeric 6	Light Blue	20x30mm	150 labels
44207	Numeric 7	Purple	20x30mm	150 labels
44208	Numeric 8	Mauve	20x30mm	150 labels
44209	Numeric 9	Brown	20x30mm	150 labels
44228	Year Code 08	Mauve	20x30mm	150 labels
44229	Year Code 09	Brown	20x30mm	150 labels
43300	Alpha&Numeric Starter Kit	2 sheets of each alpha and numeric		30 labels per sheet

## AVERY MONTHLY CODING LABELS



Code	Description	Size	Pack
43401	January	23x38mm	Pkt 180 labels
43402	February	23x38mm	Pkt 180 labels
43403	March	23x38mm	Pkt 180 labels
43404	April	23x38mm	Pkt 180 labels
43405	May	23x38mm	Pkt 180 labels
43406	June	23x38mm	Pkt 180 labels
43407	July	23x38mm	Pkt 180 labels
43408	August	23x38mm	Pkt 180 labels
43409	September	23x38mm	Pkt 180 labels
43410	October	23x38mm	Pkt 180 labels
43411	November	23x38mm	Pkt 180 labels
43412	December	23x38mm	Pkt 180 labels

## Coding Labels

## SOLID BLOCK LABELS



Code	Description	Colour	Size	Box
44540	Block Label	Black	19mm	240 labels
44541	Block Label	Brown	19mm	240 labels
44542	Block Label	Dark Green	19mm	240 labels
44543	Block Label	Light Green	19mm	240 labels
44544	Block Label	Orange	19mm	240 labels
44545	Block Label	Pink	19mm	240 labels
44546	Block Label	Purple	19mm	240 labels
44547	Block Label	Red	19mm	240 labels
44548	Block Label	Yellow	19mm	240 labels
44549	Block Label	Light Blue	19mm	240 labels

# Lockable Tambour Door packages

**Filing  
Consultation  
Available**

## Avery Lateral Filing Packages

Save valuable office space as you transform filing chaos into order. Choose from seven filing packages incorporating cabinets, files, file fasteners, labels and outguides. Tambour door cabinets are lockable to secure your documents safely. Open bay cabinets have easy access with no door and are ideal for when used by numerous people on a frequent basis.

**Cabinets available in Wild Oats=WO Light Grey=LG Graphite Ripple= GR**

Packages include a number of the following items:

**Levels** - Refers to the number of shelves within the cabinet.

**Rear Stops** - Support shelf dividers at the back of the cabinet.

**Shelf Dividers** - Act like bookends allowing you to store files within the cabinet.

**Lateral Files** - Are white foolscap extra heavy weight files with a 35mm expansion.

**Tubeclips** - Easily attach to lateral files to ensure pages are secure. Tubeclips expand as the file fill, eliminating wasted space.

**Outguides** - Are used when a file is removed from a filing system. Simply place the file with an outguide on which the file user can note where the file is going.

**Avery Lateral Filing Labels 4 per sheet.**

**Avery File Pro Software=single licence.**



**A**



**B**

CODE 10120 PACKAGE 1 (A)		
height	width	depth
960mm	1200mm	460mm
•Lockable Tambour Door Cabinet •3 Levels •3 rear Stops •9 Shelf Dividers •300 Lateral File white FC •300 Yellow Tubeclips •Outguides Pack of 25 •1 Avery File Pro Software •400 Lateral Filing labels		

CODE 20120 PACKAGE 2 (B)		
height	width	depth
1980mm	1200mm	460mm
•Lockable Tambour Door Cabinet •6 Levels •6 rear Stops •18 Shelf Dividers •600 Lateral File white FC •600 Yellow Tubeclips •Outguides Pack of 25 •1 Avery File Pro Software •400 Lateral Filing labels		

CODE 10900 PACKAGE 3		
height	width	depth
960mm	900mm	460mm
•Lockable Tambour Door Cabinet •3 Levels •3 rear Stops •9 Shelf Dividers •300 Lateral File white FC •300 Yellow Tubeclips •Outguides Pack of 25 •1 Avery File Pro Software •400 Lateral Filing labels		

CODE 20900 PACKAGE 4		
height	width	depth
1980mm	900mm	460mm
•Lockable Tambour Door Cabinet •6 Levels •6 rear Stops •18 Shelf Dividers •600 Lateral File white FC •600 Yellow Tubeclips •Outguides Pack of 25 •1 Avery File Pro Software •400 Lateral Filing labels		

CODE 13120 PACKAGE 5 (IMAGE NOT SHOWN)		
height	width	depth
1320mm	1200mm	460mm
•Lockable Tambour Door Cabinet •4 Levels •4 rear Stops •12 Shelf Dividers •400 Lateral File white FC •400 Yellow Tubeclips •Outguides Pack of 25 •1 Avery File Pro Software •400 Lateral Filing labels		

CODE 13900 PACKAGE 6 (IMAGE NOT SHOWN)		
height	width	depth
1320mm	900mm	460mm
•Lockable Tambour Door Cabinet •4 Levels •4 rear Stops •12 Shelf Dividers •400 Lateral File white FC •400 Yellow Tubeclips •Outguides Pack of 25 •1 Avery File Pro Software •400 Lateral Filing labels		

**Cabinet packages**



**A**



**B**

<b>*CODE 17200 PACKAGE 7 (A)</b>		
height	width	depth
2200mm	1200mm	400mm
•Open Bay 6 Level Cabinet •6 File racks 1200x390 •6 Levels •600 Lateral File white FC •600 Yellow Tubeclips •Outguides Pack of 25 •1 Avery File Pro Software •400 Lateral Filing labels		

<b>*CODE 19000 PACKAGE 8</b>		
height	width	depth
2200mm	900mm	400mm
•Open Bay 6 Level Cabinet •6 File racks 900x390 •6 Levels •600 Lateral File white FC •600 Yellow Tubeclips •Outguides Pack of 25 •1 Avery File Pro Software •400 Lateral Filing labels		

<b>*CODE 20250 PACKAGE 9 (B)</b>		
length	height	width
2560mm	2175mm	1250mm
•Rola Unit •6 Levels •5 Adjustable Shelves per bay •4 bays 2000m H x 1200mm W x 400mm D •Consumables not included		

\*Installation is required



## Additional Avery Products

### TRIM LABELS



Used in conjunction with Trim Software.

Code	Description	Size	Box
38944	4 up A4 sheet	Box 100 sheets	400 labels
38945	5 up A4 sheet	Box 100 sheets	500 labels
38946	6 up A4 sheet	Box 100 sheets	600 labels

### MEDICAL RECORDS DIVIDER

Code	Description	Colour	Size	Pkt
41200	Printed Dividers Diagnostic	Buff	A4	100
41201	Printed Dividers 1st Admission	Buff	A4	100
41202	Printed Dividers 2nd Admission	Buff	A4	100
41203	Printed Dividers 3rd Admission	Buff	A4	100
41204	Printed Dividers 4th Admission	Buff	A4	100
41205	Unprinted Dividers 5th Position	Buff	A4	100
41206	Printed Dividers Outpatient	Buff	A4	100
41209	Printed Dividers Correspondence	Buff	A4	100
41210	Printed Dividers 5th Admission	Buff	A4	100
41213	Printed Dividers Emergency	Buff	A4	100

### LASER LABELS



Code	Description	Size	Box
959004	L7163 14 per sheet	100	1400 labels
959005	L7164 16 per sheet	100	1600 labels
959009	L7167 1 per sheet	100	100 labels

### MANILLA DIVIDERS



Code	Description	Colour	Size
97059	5 Plain Tab	Buff	A4
97058	10 Plain Tab	Buff	A4
98086	5 Plain Tab	White	A4
98089	10 Plain Tab	White	A4
97005	5 Plain Tab	Pastel	A4
97010	10 Plain Tab	Pastel	A4