

## Workstation Comfort

### MS80B Adjustable Monitor Stand

Contemporary design with stacking columns raises monitor from 1" to 57/8" in increments of 15/8" for an ergonomically correct level. Features ample storage space underneath to maximize desk space. Great for laptops, printers or monitors up to 21" or 80 lbs. No-skid base. Lifetime warranty.



Height Adjustable

### MS101 Adjustable Monitor Stand, with one drawer

Adjusts in increments of 11/2" to provide a comfortable monitor viewing height to help reduce eye and neck strain. Sturdy construction supports monitors up to 21" or 80 lbs. Extra drawers available to help organize common desktop computer and printer supplies. Lifetime warranty.

### MS100CG Extra/ Replacement Drawer

Additional Stand Drawer raises MS101 stand in 11/2" increments. Raises monitor or printer to comfortable viewing height. Stack up drawers to organize desk space. Lifetime warranty.

### FR530CB Adjustable Foot Rest

Extra-wide 22" platform provides ample space for both feet. Height and tilt adjustable. Heavy-duty steel construction for extra stability. 3M™ Safety Walk™ Slip-Resistant Surface keeps feet from sliding. Lifetime warranty.



### FR330 Adjustable Foot Rest

Contoured, 18" wide non-skid plastic platform with soft bumps to massage and soothe your feet. Height and tilt adjustable. Durable, heavy-duty steel base. Lifetime warranty.

### CS100 Adjustable CPU Stand

Enjoy easy access to your CPU. Avoid twisting or bending to reach rear cables and ports. Simply roll CPU stand forward for access. Width adjustable from 33/4" to 91/4" to fit virtually all CPUs. Front wheels lock in place. Holds up to 50 lbs. 30 day warranty.



## Privacy Filters

### Notebook and LCD Privacy Filters

Helps provide privacy and protection for LCD screens while traveling or when viewing sensitive data in high traffic areas with no blurring or distortion. Darkens screen images from a side view. Fits desktop LCD monitors too. Comes with two different attachment systems. Stays in place when laptop is closed. Lifetime warranty.



### Privacy Filters

Darkens screen images from side views to keep your on-screen data private, with no blurring or distortion. Blocks up to 99.9% of ELF/VLF E-field radiation and eliminates static charge and dust buildup when properly grounded. Reduces screen glare up to 95% to help prevent eyestrain related to computer monitor use. Helps protect fragile LCD screens from fingerprints, scratches and damage. Fits both LCD and CRT monitors – comes with two sets of hanger arms to meet most users' preferences. Lifetime warranty.



### Standard Computer Filters

Basic protection, economical price. Reduces up to 90% of screen glare. Light tint glass for improved screen contrast.



### EX10 Flat-Frame Style for LCD or CRT

Includes both LCD and CRT hanger arms in package. Black. Lifetime warranty.



### BF10 Flat-Frame Anti-Glare Filter for CRT

Light tint glass provides up to 90% glare reduction. New improved model also provides anti-radiation feature to block up to 99.9% of ELF/VLF E-Field radiation.



### Executive Filters

Light tint glass provides up to 99% glare reduction to prevent glare-related eyestrain and headaches. Blocks up to 99.9% of ELF/VLF E-field radiation and eliminates static charge and dust buildup when properly grounded. Helps protect fragile LCD screens from fingerprints, scratches and damage. Meets AOA specifications for VDT glare reduction. Flat-frame style includes both LCD and CRT hanger arms in package. Lifetime warranty. EF200 Flat-Frame Style for LCD or CRT – Black or Putty



### Professional Computer Filters

Viewing comfort and protection in economical filters. Reduces glare up to 95%. Blocks up to 99.9% of ELF/VLF E-field radiation and eliminates static charge and dust buildup when properly grounded. Improves screen contrast. Flat-frame style includes both LCD and CRT hanger arms in package. Lifetime warranty. AF100 Flat-Frame Style for LCD or CRT – Putty



EP1

The EP1 is a more compact version for small to medium build. It is suitable for left and right handed mousing and is suitable for conventional keyboard usage. Size 80cm width x 50cm depth Weight 3.3kg Colours Charcoal, Black, Beige and Oyster



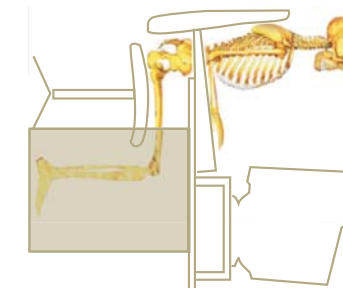
EP3

The EP3 is designed for right hand mouse use, medium to large build. It has a deep keyboard recess to reduce wrist extension. Suitable for ergonomic keyboards. Size 90cm width x 60cm depth Weight 4.4kg Colours Charcoal, Black, Beige and Oyster



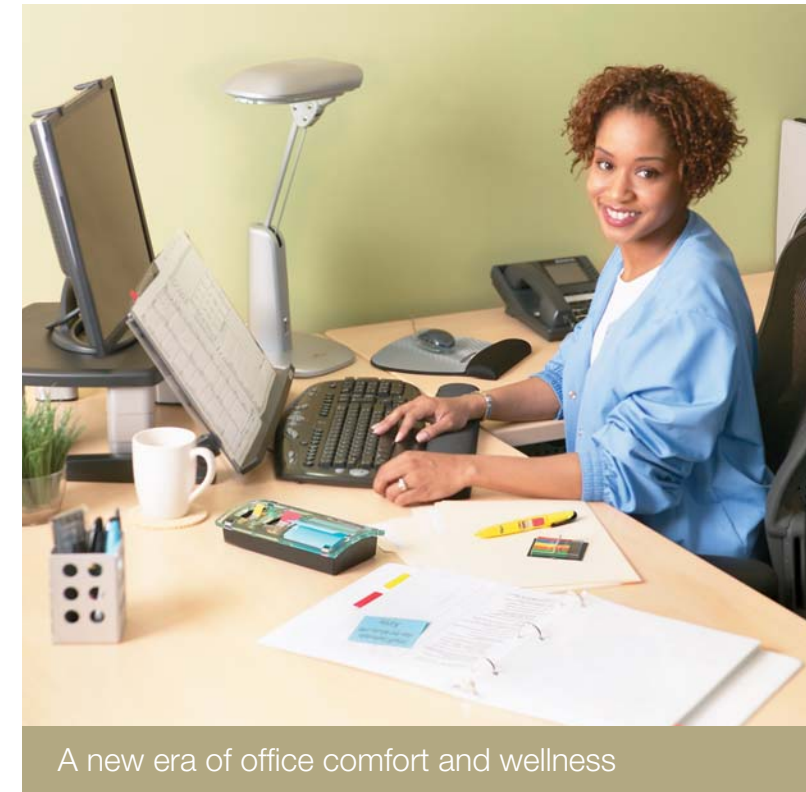
- Scientifically developed to help reduce muscle fatigue experienced in your postural muscles while seated at a computer workstation.
- The 3M Ergoport PosturePod is designed to help prevent shoulder tension, neck tension and tension headaches by supporting the weight of your arms and shoulders on a soft and supportive base.
- The keyboard recess allows the wrists to remain in a neutral position, taking pressure off the Median nerve that may help prevent Carpal Tunnel Syndrome.
- Available in 2 sizes and comes in 4 colours, Black, Charcoal, Beige and Oyster.

**3M** ergoport PosturePod



# 3M WORKSPACE SOLUTIONS

A NEW DAY AT THE OFFICE . . .



A new era of office comfort and wellness

3M Workspace Solutions has a wide range of products that enhance your comfort and productivity while you work. A pacesetter in the ergonomics industry, we combine attractive design with functional excellence to maximise workplace effectiveness. It's all about improving your workplace comfort so you can focus on your work and be more productive. You'll find a wide variety of quality products in this brochure, designed to meet exacting standards. So discover new levels of office comfort with our Workspace Solutions – quality products that offer you a better way to work

**3M Australia Pty Limited**  
950 Pacific Highway, Pymble NSW 2073  
P - 136 136

**3M New Zealand**  
250 Archers Rd, Glenfield, Auckland NZ  
P - 64 9 4444 760

**3M Innovation**

**3M Innovation**

**Office & Mobile Cleaning Products**

**CL600 Anti-Static Electronic Equipment Cleaner**

Removes fingerprints, dirt, grease and dust from PDAs and multiple electronic equipment surfaces. Anti-Static agent helps reduce dust build-up. Streak-free formula. Foaming action prevents running on vertical surfaces. Fresh citrus scent. 10 oz. Aerosol can.



**CL564 Disinfecting Desk & Office Wipes**

Same formula as CL574 Disinfecting Office Cleaner. Quick and easy way to clean, disinfect and deodorize in one easy step. Excellent for cleaning shared work areas. Kills germs, bacteria and viruses on contact. Pre-moistened and ready to use wipes. Leaves a crisp, citrus scent to help freshen up the office space. 7" x 8" wipes. 25-count canister.

**CL674 Keyboard Cleaning Kit**

Two depths on scrubbing tool to adapt to all types of keyboards. Cleaning solution helps cut through grime, grease, fingerprints. Fits into hard-to-reach places on keyboards, telephones and fax machines for better cleaning. Four finishing cloths included.



**CL680 Screen and Keyboard Cleaning Kit**

All-in-one kit for cleaning screens and keyboards. Contains unique double-sided applicator, five replacement chamois wipes and cleaning fluid in the spray bottle. Works great on glare filters too.

**Gel Wrist Rest Platforms**

**WR422LE**

Tilt-Adjustable Platform for Keyboard and Mouse. Mousing surface repositionable for left handed mousing. Leatherette Gel surfaces are buttery-soft and easy to clean. Lifetime warranty.

**WR420LE**

Tilt-Adjustable Platform for Keyboard. Leatherette Gel surfaces are buttery-soft and easy to clean. Lifetime warranty.

**WR421LE**

Tilt-Adjustable Platform for Mouse. Leatherette Gel surfaces are buttery-soft and easy to clean. Lifetime warranty.



**Gel Wrist Rests for Keyboards, Mousemats, Mousepad/Wrist Rests**

3M™ Gel Wrist Rests for Keyboards and Mice are available in a variety of designs, colours and materials to suit your workspace and style.



WR310GY  
Fabric Wrist Rest – Grey

MS201MX  
3M™ Pricise™ Optical Mousing Surface – Metallic

MW311MX  
3M™ Pricise™ Optical Mousing Surface with Gel Wrist Rest. Fabric, premium size - Metallic



WR310BE  
Fabric Wrist Rest – Blue

MS201BE  
3M™ Pricise™ Optical Mousing Surface – Blue

MW311BE  
3M™ Pricise™ Optical Mousing Surface with Gel Wrist Rest. Fabric, premium size - Blue



WR310MB  
Fabric Wrist Rest – Black

MS201BH  
3M™ Pricise™ Optical Mousing Surface – Beach

MW311BH  
3M™ Pricise™ Optical Mousing Surface with Gel Wrist Rest. Fabric, premium size - Beach



WR314MB  
Fabric Wrist Rest for Ergonomic Keyboards – Black



WR302BH  
Clear Gel Wrist Rest - Beach

MWJ309BH  
3M™ Pricise™ Optical Mousing Surface with Gel Wrist Rest Clear Gel, compact size - Beach

**Desktop Document Holders**

**DH640 In-Line Document Holder**

Position directly between monitor and keyboard, just below monitor. Weighted base allows ledge to dip below the desk edge. Easy to adjust. Elastic line guide marks your place, keeps pages open and stretches to accommodate even the thickest books. 18" wide, this model supports books, catalogs and just about any size document. Angle and height adjust to suit your needs. Black/Clear. Sheet capacity\*: 300 sheets. Lifetime warranty.



**DH630 Compact In-Line Document Holder**

For workstations with less space. Provides same in-line document holding functionality and adjustability. 14" wide, easy to adjust, with elastic line guide. Can stand alone on desktop or hangs over edge of desk when tracks are mounted with 3M™ Command™ Adhesive. Black/Clear. Sheet capacity\*: 150 sheets. Lifetime warranty.



**DH340MB Desktop Document Holder**

A simple design that works beautifully. Height-adjustable clip secures documents in both portrait and landscape. Deep ledge holds letter or legal sized documents. Non-skid base. Folds flat for easy storage. Black/Silver. Sheet capacity\*: 150 sheets. 30 day warranty.



**Monitor Mount Document Holders**

**DH445 Flat Panel Document Holder**

Sleek, lightweight design works beautifully with flat panel monitors and traditional desktop CRT monitors. Grooved ledge with height adjustable clip secures sheets in portrait or landscape view. Swings out of way when not in use. Black/Clear. Sheet capacity\*: 35 sheets. 30 day warranty.



**DH440MB Monitor Mount**

Document Holder for CRT Monitors. Designed for mounting to full size CRT monitors. Height adjustable clip raises to accommodate legal documents and lowers to hold documents in landscape orientation. Black/Silver. Deep ledge holds up to 150 sheets. 30 day warranty.



**Workstation Comfort**

**EM500 (GPL/GPS) Ergonomic Mouse**

The unique, ergonomic vertical grip design has been clinically proven to reduce muscle strain and discomfort associated with carpal tunnel syndrome and repetitive stress injuries compared to using a traditional mouse. Enhances your comfort by keeping arms and shoulders in a more relaxed, neutral position. Optical USB/PS2 compatible plug and play. For right-hand use. 2 year warranty. EM500GPL - Large EM500GPS - Small

